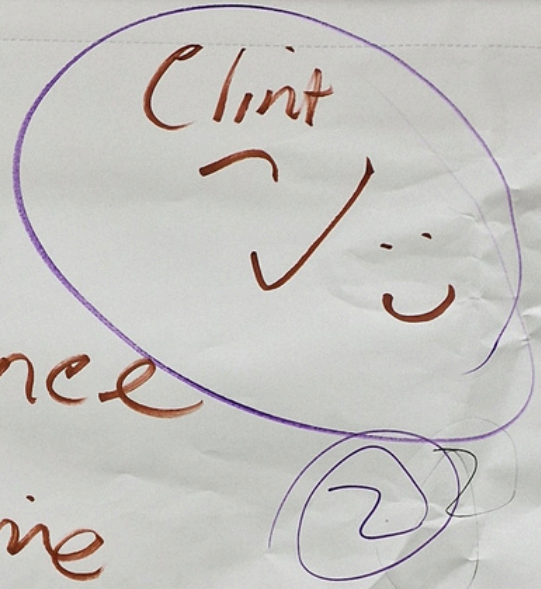


Intro:



- Critical Team
- Plant Performance
- Changes over time

- Stability of group ME

- Success

- Great to deliver

- Invest in team!

- Appreciate time welcome

- Not cheap

- Invest in you!

- Enjoy the work

- Feel good!

"Build a successful Team"

- Appreciate

- Simplify

> Self-awareness "Do self, out of job"

- Brain power

> Tasks & outputs

# Book List:

- Slow productivity

3

- Never split the difference

The Fearless Organisation  
2018 " " "

- Atlas of the Heart

# Expectations

(4)

→ Communication ✓✓✓

→ Tolerance: (Annoyed, don't bite)  
Acceptance

- Info share ✓

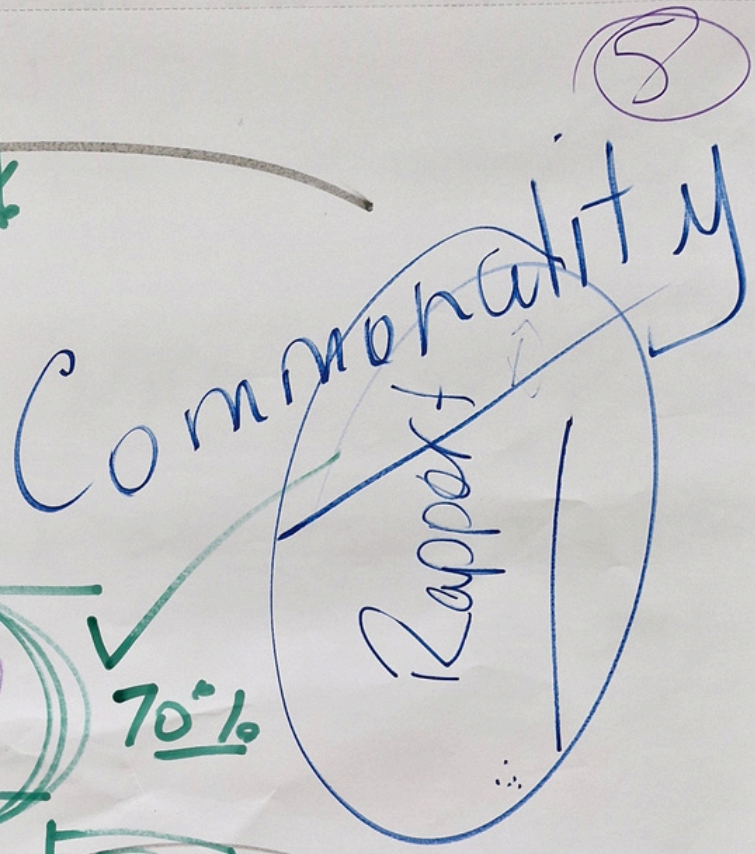
- Personal development  
Learning ✓

- Fun! ✓✓✓

"Make 'em laugh, & they will learn" ☺

# Outputs

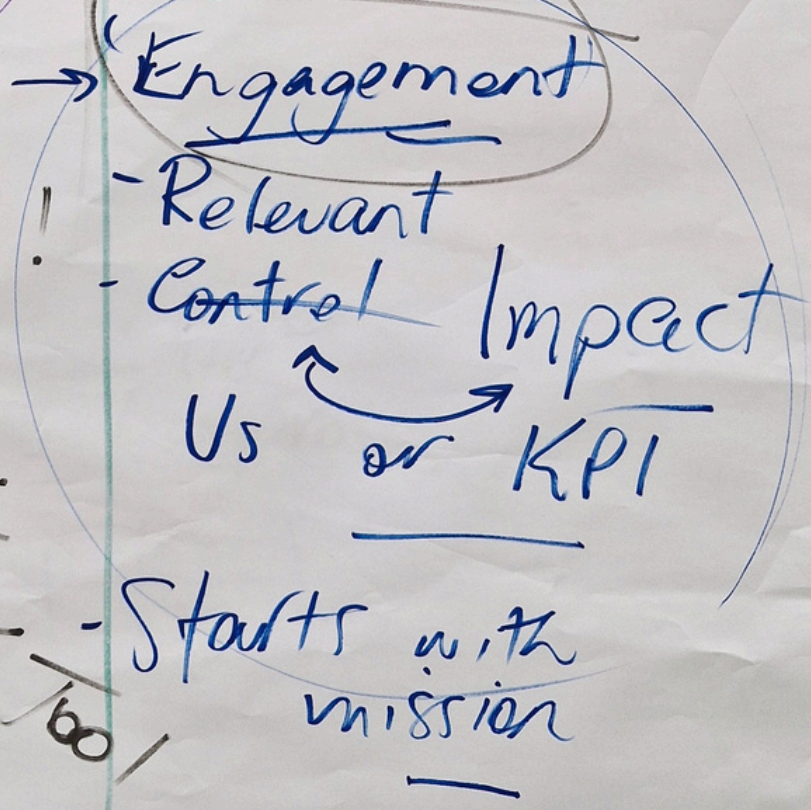
- Results
- Product / <sup>Chem.</sup> Elec.
- Services:  $\frac{S}{S}$



KPIs

69% 70%

- Some!
- Measure!
- Control
- Variables
- Limit



- we know too!  
- we are responsible

- Starts with mission

All have roles

# Actions.

- KPI review.
- We're not me!

②

- Develop One KPI each ✓  
(eg. Demin tank storage)

\* ⑩ level - x - y

③ We

- Alone time - schedule

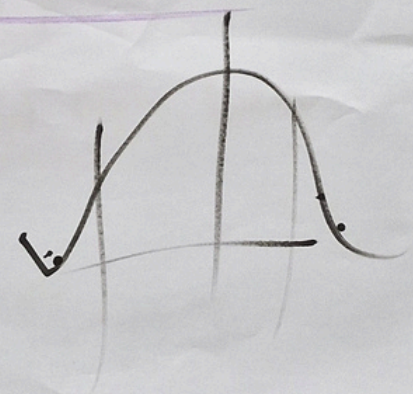
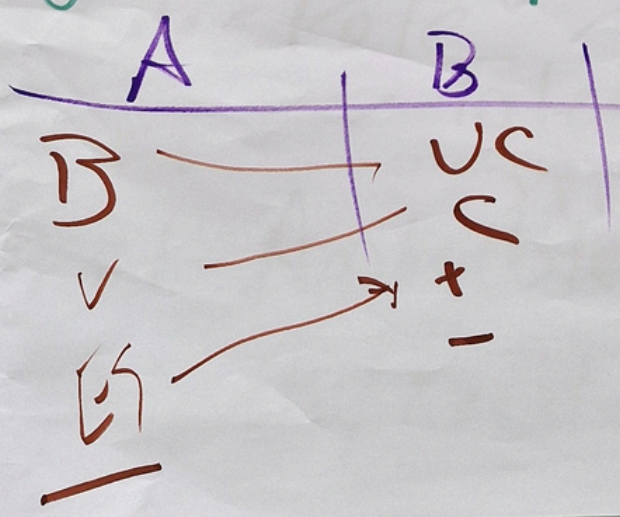
- 1:1 coaching: Adapt!

Acknowledge (Intent)  
Challenges! (ARSR)

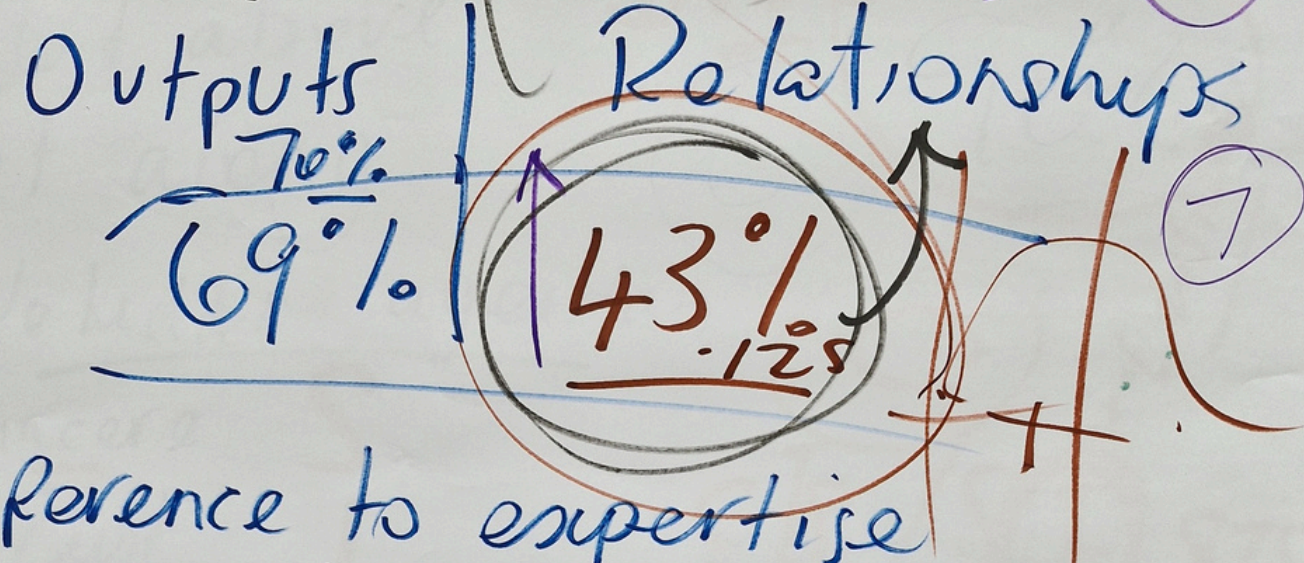
Presumpt

→ Know your triggers

- Page 19 - Improvement



# > Inclusion (we) . 4 . U.S



## Deference to expertise

- I Learnt: -
- Psych Safety ! feel to supported!
- SUPPORT ↔ Need
- How we —
- Make others feel + ♡
- Amy Edmondson ✓
- Style = Role ✓ (Common)
- HET — Tolerant
- Strict on US.
- KPI - Applicable
- Outputs / Relationships

M → CS / CS 80%

- Services
- Not above
- Get along

DISC

8

90%

Learning

- No hidden agendas

Sincere S

- Trust I

- Not hard sell

CS

SD

87.5%

S SD

CS/SD

80%

Name	US	Actual	
J	CS	CS/	80%
R	CS	CS/CS	80%
B	CS	CS/CS	90%
O	CS	CS/CS	90%
M	CS	CS/CS	90%
K	SD	CS/DC	85%

Self

Social

1

9

R  
I  
A

R  
I  
A

R  
I  
D

Conversations

R  
I  
A

R  
I  
A

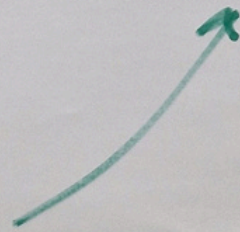


1 Word:

- Collaborative
- Beneficial
- Outstanding
- Informative
- Positive
- Insightful
- Enlightening
- Potentially

10

—



# Team Member

Legacy

- Me! - Reliable resource

- Josh: Demeanour!

(11)

- Noel: Patient, tolerant, hard worker, lovely, conducted - professionally

Kellie: We compliment each other, rely on each other, worked well together

- Tamer: taught me everything - direction like Noel

- Charlie: supportive, reliable, heard support too

- Stuey: Mentor! Time

- Tim: Considerate, Impact, Sharing, time, teaching

Lyn: - Compliment