

2901251



ACTION PLAN



Leadership Development Program 2 x 2 Hour Workshops

23, 24 February 2025



Leadership on Purpose

Leadership under Pressure

Leading with Perspective

The Outcomes - High Goals

Generally:

The Georgina Pastoral Company are continuing the journey of developing their Head Stockman, to strengthen their buy in to represent the Company's values of Family, Integrity, Loyalty, Cattle Care, Infrastructure Development and Sustainability.

The opportunity is to deliver Leadership training to help the young Men and Women balance ambition with people leadership skills, build confidence to contribute to Station strategy and implementation. While incorporating consistency and attention to detail into their decision-making.

To support the emphasis on leading the Stock Camp the programed is designed to train the Head Stockman to encourage loyalty, care and courage in their teams.

Which requires one key skill - to be great at:
Leading Under Pressure ...



**Moving the needle
in your favour**

**“Supporting your leaders personal and
professional development!”**

Specifically:

To work with the leaders to work on the three key leadership skills of control, care factor, and courage, including:

- **Emotional control;** Which includes the ability to regulate your own emotional state, to get the best outcome from yourself and your teams
Note that TGG uses the Daniel Goleman EI model
- **Care Factor;** In 2025, integrity starts with caring for the psychological safety of team members, and making a personal connect with them
Note that TGG are psychology trained and experienced
- **Courage;** Leaders need to have the courage to manage interpersonal and business risk, as well as trusting their teams to do the same
Note that TGG will support leaders to support their teams

Learning these skills will upgrade your leaders, and your organisational culture!



**With a focus on Georgina
Pastoral Company's values and
organisation culture**

The Program - High Focus

01

February 2025 Leadership Development Program Development

Tailored to Georgina Pastoral Company:

- Developed based on planning discussions and finalised in conjunction with Kimberley Rains, and any other key stakeholders
- Targeting key area's of opportunity for leadership growth and development, and aligned with the business's vision and values
- Workbooks, and other workshop materials all developed, designed and printed by TGG, and taken to site by the Facilitator

02

February 2025 Leadership Development Program Delivery

23 and 24 February, 2025:

- 2 x 2 hour sessions
- Session 1: Introduction and Control (emotional control, behavioural control, and situational control)
- Session 2: Care Factor (psychological Safety) and Courage (to Try, Tell, and Trust)

03

February 2025 Leadership Development Program Close out

Within 2 working days of the program completion:

- To provide Georgina Pastoral Company with an overview of the program, and the outcomes (from the Facilitator)
- To provide details of any observations or actions completed during the program
- To discuss the success of the program, and a way forward, including future focused leadership coaching

The Investment - High Value

WHAT	WITH	INVESTMENT
<p>2 x 2 hour sessions, on: Sunday and Monday</p> <p>(In Tambo, QLD)</p>	<p>23 February 2025 24 February 2025</p> <ul style="list-style-type: none"> • Leading Under Pressure • Self Diagnostic • Interactive 	<p>\$6,000*</p>
<p>Travel (if and as required)</p>	<p>On-charged at Cost Price Only</p> <ul style="list-style-type: none"> • Flights • Accommodation • Meals 	<p>\$1,500 *</p>

* All investments are exclusive of GST

Total investment excludes travel expenses (on charged at cost - no mark up), if booked by TGG

\$6,000 *

The Case Studies - High Results



“Having just finished a 2-day workshop with Anton, I can honestly say that I have learned more about myself in the past 2 days than I have in the previous 2 years.

I would highly recommend TGG and their approach to training, and I will most definitely be looking into more coaching with these guys in the near future!”
— The Aussie Cuttler



“What I loved the most is the way that experiences from the group were drawn upon and discussed to bring life to the presentation. Contemporary research was used and Anton was across key concepts, modern research, and simplicity concepts for learners.”



“I loved the engagement Anton gave to all parties and how the whole leaders had real feedback to help understand each situation and how so many different workplaces all face the same challenges. I also loved the guest speaker.”



“I would like to express a personal thank you to Anton and Ally for the training they delivered. It was not only interesting and valid; I now have a better insight into the emotional side of the way we cope differently under pressure. This will assist me in the way I approach a situation and respond to gain the desired result with all stakeholders.”



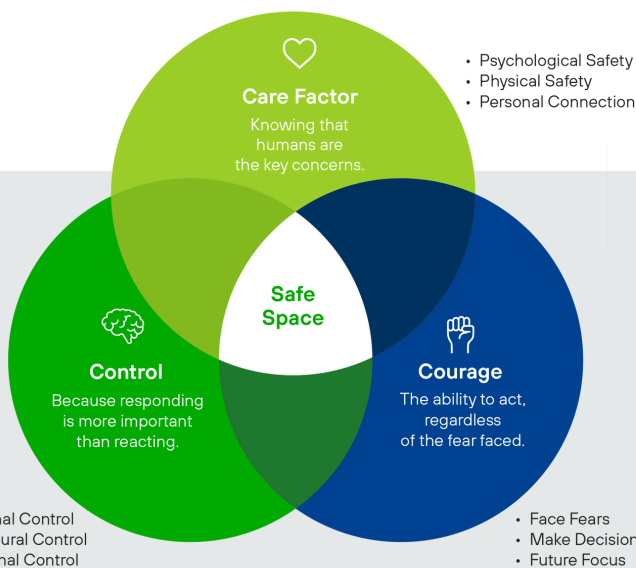
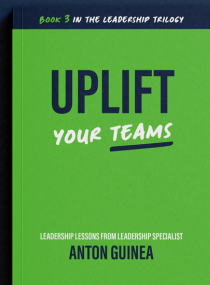
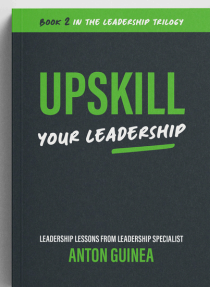
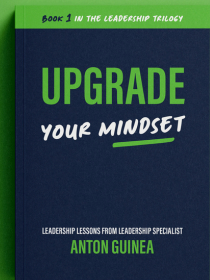
“Unreal couple of days mate. Really enjoyed it. Everyone needs to attend this or something similar in their lives. Keep up the great work.”
— Angus Wilson

The Inclusions - High Value

The Books - High Detail

About the program

- 01** A planning meeting to tailor the program content, to ensure it is on point and fit for purpose
- 02** 2 x 2 hour workshops for the Georgina Pastoral Company leaders to help them be better at leading under pressure
- 03** Self Diagnostic review for the Leaders to help them understand their strengths, and their opportunities for improvement
- 04** A close out meeting after the program to provide Georgina Pastoral Company with an overview of the program, details of the program a way forward
- 05** A free copy of one of Anton's books (each)
- 06** A professional and private webpage link that provides notes, surveys, photos and any other relevant materials that you can distribute to your leaders (resources)
- 07** Energetic and engaging training sessions that encourage enterprise thinking



The Model - High Relevance

The Facilitator - High Expertise



ANTON GUINEA

Helping to develop
leaders since 2005!

Anton Guinea, one of our expertly trained professionals and an experienced facilitator, will take charge of the process of supporting you, and your leaders, through the leader training and coaching process.

Anton is an international keynote speaker, he is a **leadership and people skills expert**, who is a qualified Resilience Coach, with a degree in Human Resources Management and Psychological Science.

Anton has personally conducted nearly 1,300 one-on-one coaching sessions with leaders across a range of industries, and he brings the experience from those sessions to his workshops and training.

Anton has been conducting training workshops since 2005 and has worked with organisations around Australia and the world.

Anton's programs are built around energy, engagement and enterprise thinking. Anton will develop a process to engage your leaders members and get them thinking differently – **guaranteed**.

It is not just the workshop experience that will make a difference to your leaders growth process; it is the before and after support (that is second to none) that will ensure the entire process is one that adds value, and is one to remember.

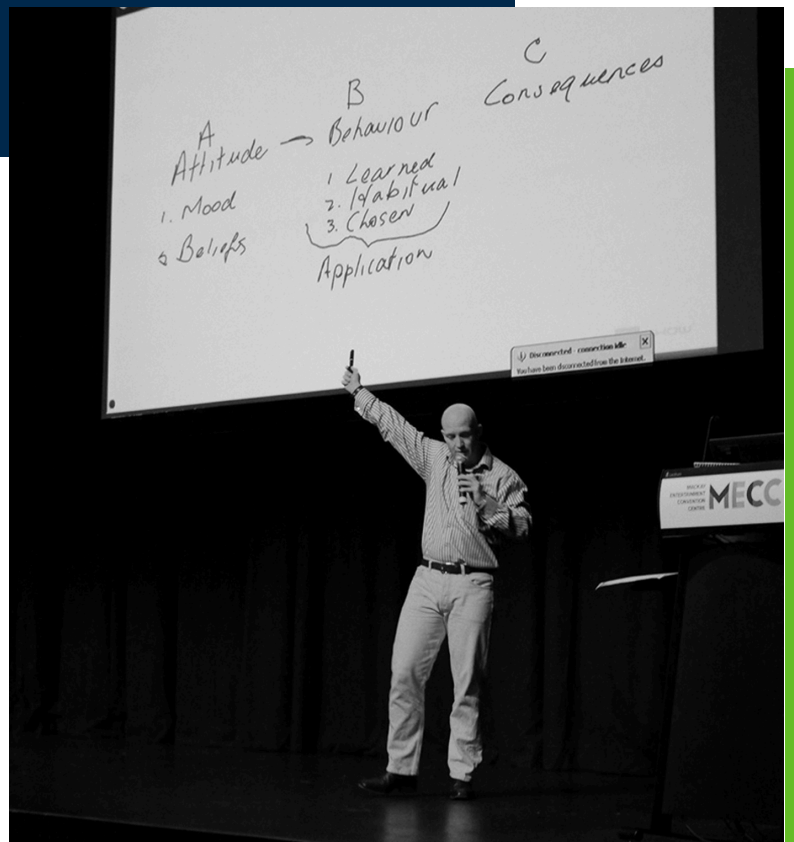
About **The Guinea Group**

Since 2005, the Guinea Group has supported leaders in understanding the importance of **relationship building**, to develop **amazing communication skills**.

Our individualised and **tailored training and coaching programs** are delivered with **energy, engagement and enterprise thinking**.

We have worked with Government Officials, CEOs, heavy industry workers and employees from a wide range of industries in **Australia and overseas**.

We are advocates for personal development, emotional intelligence and psychological safety. Our programs are based around these three key elements, and our clients get over 19 years of experience, a Business Degree in HR, a Science Degree in Psychology, an NLP Master Practitioner and much more.



Other Services - Highly Varied

People Development

- Leader coaching and mentoring programs
- Employee and safety surveying
- DISC Profiling
- Employee engagement and empowerment
- leaders building (and coach the coach training)
- Employee coaching and development
- leaders Management Systems Profiling

Workshop Facilitation

- Goal setting workshops
- Risk assessment workshops
- Problem solving (RCA and defect elimination workshops)
- Issue resolution through Mediation
- Idea generation workshops
- HSE alignment workshops
- SWOT Analysis and business planning workshops

Performance Development

- Business strategy and business process
- Procedure and system implementation
- Change management strategies
- System performance review and optimisation
- Business leaders and individual performance review and support
- Systems leadership strategies

Please see the TGG Capability Statement for more information on our services, and the **TGG Difference!**

“

I START WITH THE PREMISE
THAT THE FUNCTION OF
LEADERSHIP IS TO
PRODUCE MORE LEADERS,
NOT MORE FOLLOWERS.

-RALPH NADER

ABN: 83 116 111 543



+61 422 058 736



theleaders@theguineagroup.com.au



theguineagroup.com.au



18 Dolphin Terrace,
South Gladstone, QLD 4680



THE GUINEA GROUP